

San Jose
Buddhist Church Betsuin

Our Ministers

Rinban K. Kenshin Fujimoto
(2006 - present)



Reverend Gerald Sakamoto
(1986 - present)



Our Church Services

Weekly Dharma Service
(Family, Adult and Japanese Services, Dharma School)

Services for Buddhist holidays and observances

Study classes

Introduction to Buddhism sessions

Our Affiliated and Sponsored Organizations

Adult Buddhist Association (ABA)

Betsuin Choir

Buddhist Women's Association (BWA)

Dana Club

Dharma School (Pre-12)

EcoSangha Group

Ikebana

Japanese Language School

Judo

Junior Choir (grades 4-12)

Junior Young Buddhist Association (Jr YBA)

Kendo

Lotus Preschool

Sangha Crafters

Sangha Support

Scouting

Boy Scouts

Girl Scouts

Venture Crew

GENERATIONS

Building our Sangha in Appreciation
for the Buddha Dharma



Capital Campaign Project



San Jose Buddhist Church Betsuin

To learn and to share The Jodo Shinshu understanding of the Three Treasures

Buddha (teacher) - Dharma (teachings) - Sangha (community)



Our Story

A little over 100 years ago, in carving out a new life in a new land, pioneer Japanese immigrants, the Issei, established our temples as places to hear the teaching of the Nembutsu, to hold the rites of passage in life and as safe havens to gather. They overcame countless hardships in the process - adjusting to a new language and to different customs, the Depression and prejudice. They struggled to not only establish their families but to ensure that those families, their children and grandchildren, would have a place to gather and embrace their heritage by building our Hondo.

Over 50 years ago, after returning from relocation camps, our parents and grandparents built our Annex and later the Education Building. These facilities provided for our growing Sangha and their countless efforts to build a rich and constructive environment for their families and community.

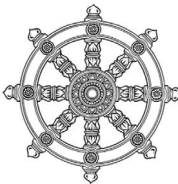
Over the years, as the spread of Buddhism continued to grow and the dynamics of our community changed to meet the needs of a much broader outreach, the Betsuin and its facilities have come to serve a much larger role. Betsuin-sponsored organizations, cultural and arts groups, youth, adult and senior community non-profits and clubs have all come to rely on these facilities. Our Sangha and their social and wellness activities are an integral part of the community.

Help Continue the Legacy

Today, the San Jose Buddhist Church Betsuin continues to serve as a gathering place to share the Buddha-dharma. Our Annex and Education Building serve our ever-growing needs, providing a 'center' for our community as we continue on our journey.

It is now up to us to ensure that future generations will have the same opportunities to encounter the Dharma together, strengthen community bonds and provide a foundation for the ever-changing needs of our Sangha.

As we continue with our Capital Campaign Project to undertake these tasks, it is our sincere hope that everyone in our Sangha will express their gratitude for the efforts of the pioneer members and support the preservation of our core values by ensuring that future generations will have a safe and beautiful place for our current and future needs.



Meeting Our Needs

The **Generations Capital Campaign Project** is a multi-million dollar undertaking with two distinct phases of restoration.

The first phase addressed seismic and accessibility concerns with the Annex Building. This phase included substantial seismic upgrades as well as the installation of an elevator and new air systems. This phase was completed in June 2016 and represents approximately one-third of our financial responsibilities.

The second phase focuses on the Education building. The Betsuin Board concluded that replacement construction would be necessary to best address safety and use issues. The completion of this phase will increase usability as well as provide a safe and enriched environment for our Sangha and the community.

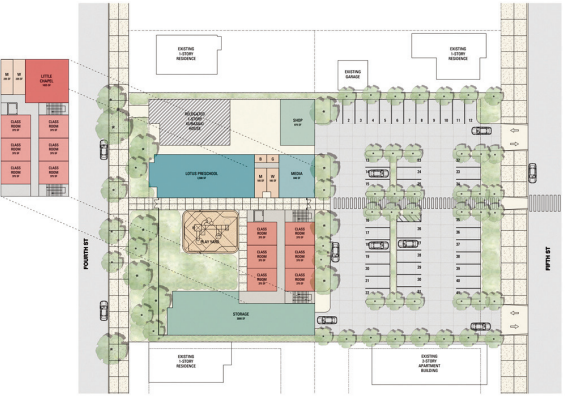
It is up to us to build a thriving Betsuin for our future generations!



Phase I – Annex Renovation (\$5.4 M)

Completed June 2016

- Safety & seismic compliance
- Increased functionality for major services, events, programs and activities
- Complete retrofit and expansion of kitchen and restrooms
- Gas, electrical, plumbing, fire sprinklers, and new air conditioning system
- ADA compliance including an elevator and stage lift



Phase II – New Education Building

An Opportunity for Growth

- Open campus design with more effective building and parking lot layout to efficiently utilize 4th and 5th street lots
- Increase square footage and number of rooms to handle the future needs of the Betsuin and its Buddhist education services
- Safety and seismic compliance
- Upgraded/customized Lotus Preschool facilities
- Larger library
- Larger and more efficient parking areas
- Maintain the ‘neighborhood’ feel on 4th Street.

How You Can Help

As our Capital Campaign continues, and while many have already given generously, we are mindful of the importance of this investment in our Betsuin’s future. Please consider a gift in support of a community that supports and enriches the lives of our Sangha and our entire community.

White Lotus	\$500,000	\$1,500,000
Blue Lotus	\$250,000	\$499,999
Red Lotus	\$100,000	\$249,999
Yellow Lotus	\$50,000	\$99,999
Pink Lotus	\$25,000	\$49,999
Lotus Buds	\$10,000	\$24,999
Lotus Pods	\$5,000	\$9,999
General Donations	Up to \$5,000	

Please contact us for other giving options.



Fundraising begins
Bruce W Davis, Fundraising Consultant, selected
Cody Anderson Wasney Architects selected

Fundraising continues
Vance Brown Builders selected

Phase I
Annex Renovation
completed June 2016

Fundraising continues
repayment of Annex mortgage
funding for Education Building Campus

Phase II
new Education Building Campus

2013

2014

2015

2016

2017

2018

Future